
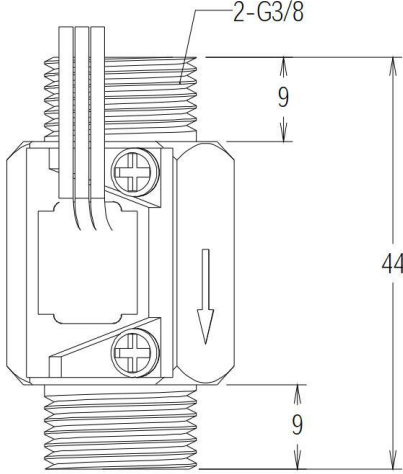
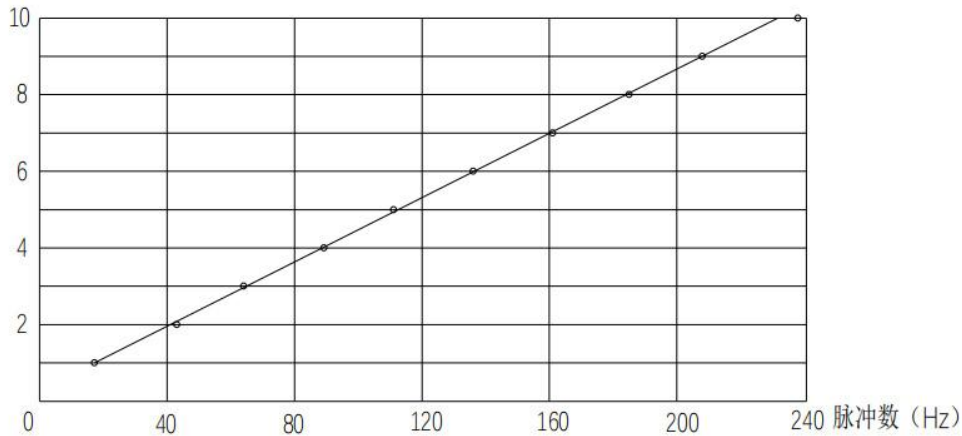


USC-HS83TA Technical Data

			
外观 Appearance		图纸 Diagram	
进水口 Inlet	3 分外丝 BSP3/8" Male	出水口 Outlet	3 分外丝 BSP3/8" Male
测量范围 Measuring Range	1-30L/min	使用介质 Liquid	Water (Tap Water Standard)
工作电压范围 Working Voltage range	DC5-24V	额定工作电压 Rated working voltage	DC 5/12/24V
输出电压 Output voltage	供电 5V/24, 输出高电平 4.5V/23.5V 以上, 低电平 0.5V 以下。 DC5/24V supply, output High level 4.5V and above; low level 0.5V and below		
最大工作电流 Max. Working Current	15mA	脉冲输出占空比 Pulse output duty cycle	50+-10%
密封性 Tightness	封闭各孔, 加 1.7MPa 水压试验 1 分钟无渗漏和变形 Seal up all the holes, and inflate with 1.7MPa water, after 1 minute, no leakage and deformation.		
绝缘电阻 insulation resistance	100M 以上 100M and above	累计流量特性 Accumulated flow	1L=1320Hz ±10%
流量 脉冲 特性 Flow Pulse Features	脉冲 (F) =22*流量 (Q) -6 (l/min) 误差: ±10%(F 每秒脉冲数) Pulse(F)=22*flow rate(Q)-6 (l/min) error: ±10% (F: Frequency/s)		
流量计接线图 Wire diagram	水流传感器: 红正黑负黄色信号输出 Water flow sensor: Red: +; Black: -; Yellow: signal;		

瞬时频率 (Hz) -流量 (L/min) 曲线表

流量 L/Min (Q)



流量特性实验室实测参数对照表

	脉冲数 (Hz)									
L/min	1L	2L	3L	4L	5L	6L	7L	8L	9L	10L
脉冲数	17.24	43.10	64.10	89.29	111.1	135.1	161.0	185.0	208.0	238.0

Note: 水流推动叶轮转动, 水流传感器输出 NPN 型脉冲信号, 如需 4-20MA 或者 RS485 通讯功能, 可以配合我司专研的流量模块实现。

- 1、当磁性材料或对传感器产生磁力的材料靠近传感器时, 其特征可能有所变化。
 - 2、为了避免颗粒、杂物进入传感器, 在进水口必须安装过滤网。
 - 3、水流传感器可任意方向安装, 但要避开有较强震动和摇晃的环境, 以免影响传感器的测量精度。
1. When magnetic material is close with the sensor, its characteristics may vary.
 2. In order to avoid particle debris, the sensor must be installed after a filter.
 3. The flow sensor can be installed in any direction. IT has to avoid strong vibrating and shaking environment, so as not to affect the accuracy.